

The 47th ICMDA-EA program, first circular

We cordially announce the coming student program at a tsunami-hit fishermen's village



Sunset on the beach of Kyubuhama, ojika peninsula in Miyagi prefecture

Preface; We Japanese Christian Medical Association (JCMA) stated just after world war two counts 70 memorial years. In these years, we had substantial contribution to the medical development by our senior doctors as Dr Shigeaki Hinohara, who went away on his age of 105 in 2017.

At the same time, we have continued the exchange program among Korean, Taiwan and Japan CMA. It counts 47years, this year, and it is formally registered to East-Asia program of ICMDA since 2017, by enrolling Mongolia and Hong-kong as members.

This time, we will hold the 47th meeting at Matsushima, Miyagi prefecture, and also student program in advance. Purpose of this meeting looks for studying the affect and recovery from the famous Higashi-Nihon disaster hit on this area and for preparing to next disasters.

Theme ;Recovery from Disasters and Crisis Situations –The Role of Christian Health Care Workers–



We know that suffering produces perseverance; perseverance, character; and character, hope. And hope does not put us to shame, because God's love has been poured out into our hearts through the Holy Spirit, who has been given to us. (Romans 5:3~5)

Proceeding to the main conference, the student program will be carried out from August 1st to 3rd at a fishermen's village.

The village cited in Ojika- peninsula, one of the severely hit areas by disastrous Tunami in 2011. They were kindly helped and supported, and eagerly started their life for recovery. We will have a chance to have field-work helping their work.

1. Through this program, Pastor Ichio Kishinami leads as a chaplain.

He used to be a kick-boxer is now ministerating Jesus Christ Kurihara Bible Baptist Church.

From the disaster, he started supporting the village people and has continued his help with perseverance and vigor. He did fisherman's work with them and preached the Bible. As a result, village people trusted in him and there are a number of families who accepted the faith.

Therefore, you will be able to learn how they got through and live their life strongly, from their mouth while you are working Oyster feeding work with them. (the work itself is simple, easily learned and has no danger)



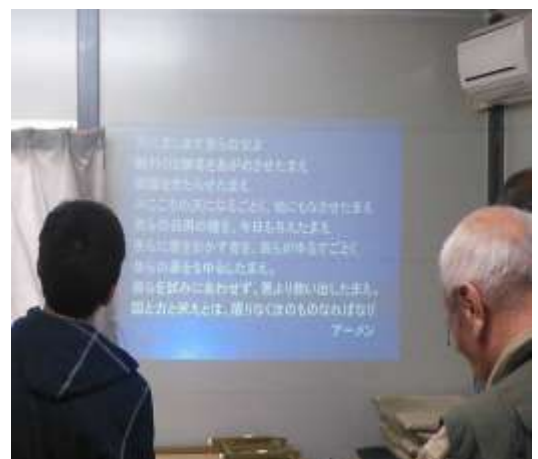
2. Dr. Toshiaki Yasuda used to work in Nepal as a Japan Overseas Christian Service worker. After getting back, he started to do medical work at one of isolated lands near this beach. he will give precious speech as a medical professional on his experience around the disaster.

3. Foreign students from consecutive countries are medical or dental students, because ICMDA is consisted only by medical-dental doctors.

Ten to twenty years before, we Japan also had medical society ruled by doctors. But recent elder society has demanded medical service not only by doctors but by multi-disciplinary personals as nurses and a variety of co-medicals. Then high-quality team work among them is indispensable. Therefore, we announce to medical-dental students, as well as nurses and co-medical students in our country. You will communicate with them, and will learn from them, because your medical society is going to be like us sooner or later.

4. In the former student program, procedure was proceeded in sincere Christian way as prayer, worship hymnal, and the Bible message.

The coming program will be done in the same way. But, as for Japanese participants, we do not declare Baptism as a condition. Some of the participants is thought to be non-Christian. They are asked to do sincere participation during the program. Thus You are requested to accept them kindly, so that they will be



Christians.

5. During the program, language is used in English as international communication. Language other than English like Chinese is difficult to be used. Therefore, all the participants should use English. Fortunately enough, English is second language in all of us, so oral communication with gesture will work, We are Asians, not Americans, take it easy and challenge! Some of the talk in Japanese will be interpreted to English.

6. Through the program, participants are divided into three groups regardless to their nation and language, and facilitator / coordinator will be set to lead each group. First, Mr. Isaku Arai, who is a pastor of Natori Christ church and lecturer of the mission universities. Second, Dr.



Masaki Moriyama, former professor of hygiene department in Hukuoka Medical university, and now lecturer of Kyusyu Red Cross international nursing university. Third, Mrs. Yasuko Nagamatsu, graduate from International community department of Tokyo University, and now associate professor of International nursing in Saint-Luke nursing university. you are expected to act as a group, and you can experience intercultural communication through English, and may find good friends and yourself which has never been imagined.

7. Dinner time of the second day, we will have joyful cultural exchange meeting with village people. Pastor Kishinami will lead. In relaxing circumstance, you will open yourself with singing and dancing.



Hopefully, the coming program will be the most wonderful encounter, memorized through your life.

Remark:

Designated time and place: August 1st, 13:30 at the east exit of JR Natori station

Program schedule is shown in the following excel file.

August 3rd, 13 o'clock at Matsushima Century Hotel, which is cite of the main conference.

Participation fee: 20 thousand Japanese yen, or 200 US \$ (Students are favored to pay totally 25 thousand yen or 250 \$, if you continue to participate main conference till 5th.)

The fee will be collected at the program.

Registration dead line is July the 1st , but maximum capacity is 30. If participatory number is to 30 earlier, registration is closed at that time.

Application destination : to Tomoyuki Igari. MD, mail address PXBO4020@nifty.ne.jp

Cancellation can be done till July 24th. After that time, you have to send the fee through bank transfer.

Working language: English, other language is difficult to comprehend.

Wear and personal belongings will be informed later.

※ You drop in Ushiroyama-so, Japanese style village inn. The inn was newly rebuilt, is neat and has western style toilet, easy to be used by foreigners.

※ Designated place is determined to be JR Natori station. The reason is; easiness of finding the meeting point and chartered bus accessibility. JR Natori is the third stop, ten minutes from Sendai airport via Sendai airport transite line. JR Natori is the forth stop south, fourteen minutes from JR Sendai via JR commuter line. Every train south from Sendai goes to Natori regardless of its destination. Train starts in 20~30 minutes' interval. You have to push the door button to get on and get off from train.

※**For students who want to stay the night before August 1st, Natori Church (Pastor I. Arai) is kind enough to accept one night dropping in the church.** You can use the church after 16 o'clock on July 31. 1000yen or 10\$ is the fee including two meals. If you want to use, let us know this in your application through E mail.

※ Atomic radiation revel has been minimal below natural baseline since 2011 in Miyagi prefecture and no health related affect reported since then. You need not be anxious about stay and food.

Schedule:

	august 1st	2nd	third
7:00	Wednesday	Thursday	Friday
8:00	To Sendai by Air or train	7:00~prayer, devotion	7:00~prayer, devotion
		7:30~breakfast	7:30~breakfast
9:00		8:30~fellowship time	clean up, check out
10:00		9:00~11:30 work of oyster cultivation with the people	presentation time by the groups
11:00			Closing prayer
			11:00~move by bus lunch in the car
13:00	Meeting point and time East exit of JR Natori station by 13:30	lunch	13:00 arrival to the hotel
14:00	13:30~16:00 move by bus To Kyubuhama, ojika peninsula	13:30~15:00 stroll tour of the tsunami hit beach fellowship in each group narrative of the village people	to main conference
16:00			
17:00	Starting prayer welcome, orientation	16:00~ The Bible message from Pastor I. Kishinami Testimony of the village people	
18:00	17:30~18:30 supper		
19:00			
20:00	19:00~20:30 lecture by DR. T.Yasuda Medical experience around the disaster	19:00~20:30 Banquet/fellowship with the people	
21:00	group time, first meeting	group time, reflection	
	21:30~ bathing, sleep	21:30~ bathing, sleep	